



BCBM BOAT SHARE LTD

# Newsletter

## Special Points of Interest

- New BSS regulations
- Boat Sales on the Up
- Demand for New Shares increasing

## Some of what's in this issue:

CRT Closures	1
From the chair	2
Owners' journeys	3
Get to know the team	3

## BC Boat Management

### Issue 3

### New BSS regulations

Some of you may have seen in various publications about the new Boat Safety Scheme (BSS) requirement. Some articles stated this would effect the boats that we manager. I would like to confirm it does not!

This was something we were made aware of last year and looked into, we were told this would not affect the boats we manage as they are not classed as a hirer boat due to the private licence they hold. Nearer to the date of the enforcement

on this (1st April 2017), BSS listed a revised wording for what is & isn't not classed as a 'hirer boat' for the purpose of this requirement. Again with the help of BMF (British Marina Federation) who were helping with the roll out of this requirement, we sought guidance to confirm it still did not affect the boats we managed. The syndicate boats it *does* effect under management are commercial, corporate such as RBS, time-shared such as diamond resort etc.

The BSS have confirmed the following *'to be 'in control' of the risk and so for the boat to be a private boat for the purposes of the BSS examination, the management company would simply ask the owners to review and acknowledge the maintenance schedule and any associated worklist.'* As this is what happens anyway then there is no requirement to change.

Shortly after this legislation we had a BSS exam and we are please to say it was all completed within an hour and 45 mins with a 'Pass' as a private boat.

### Check for closures

Now that we're getting closer to Winter, don't forget if you going out to check for stoppages which Canal and River Trust are planning. They have issued there programmed winter maintenance schedule for 2017/2018. However as always this is subject to change. It is always advisable to check your planned route for stoppages to

make sure you do not end up trapped. Also it is worth checking the day before you leave as the dates are subject to change at short notice if they have over-run on work else were or similarly finished one job ahead of schedule. This happened to Andrew and Family once. They arrived at a lock to find it all padlocked and the

pound on the other side empty. There was no winding hole and the boat had to be pulled backwards. Also you can sign up for notifications on the CaRT site. They will then email you about and closures/ updates/ and reopening's of canals and rivers you specify, go to [canalriver-trust.org.uk/notices](http://canalriver-trust.org.uk/notices) to find out more.

### From the Chair



Dee Barton & Andrew Barton  
(MD of BCBM)

“thanks again to  
everyone that  
continues to ask  
after Andrew ”

Well, I will start with thanks again to everyone that continues to ask after Andrew and his progress, he is still doing well. I mentioned in the last newsletter he was trying to establish a coffee morning of locals who have suffered difficulties with their speak and language through a stroke. This is now up and running and each week it seems to grown in size.

So what's new with BCBM, At Crick this year we had out new novelty board, the old ones you get at the seaside. You will see below I managed to capture a picture with Charles, Carole and Andrew. There were lots of passer-by's having fun with this by taking photos sharing the concepts of shared boating. You may also know that we have decided not to launch a new boat

this year or next year in 2018. We have chosen to focus on the sale of resale shares. We are there looking for a boat to take to Crick next year which will show off a large range of shares available. If you think your boat could be there over the May Bank holiday weekend contact me for details and we can see what can be arranged.



### Barry's Facebook

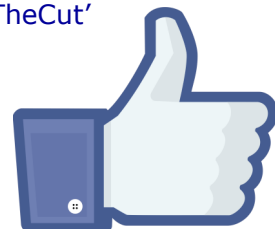
For those of you on Facebook, there is a page which has been set up by an owner in Dawn Treader. Its has been created for all like minded share owners to pass tips, tricks and share experiences. Also welcome and boaters new

to the whole idea of shared ownership. here they can ask questions and gain advice from the people who know it best 'You'. To find the group, search 'shared Narrowboat Owners Group' this page has

already helped one couple who have now purchased a share.

So why not search for it and share amongst friends who have show an interest in knowing more.

There is also a video link to a short clip about how it works with the popular vlogger 'CrusingTheCut'



## **Birmingham or Bust?**

*Clive and Judy Elliot are now in their 15<sup>th</sup> year as shareholders in Broadsword, and have written the following article.*

This May we decided to do a circuit through Birmingham and Wolverhampton – we have taken Broadsword to Birmingham before but it was from Rugby, not as this time from King's Bromley. From 'The Swan' at Fradley, it is straight down the Birmingham and Fazely to Salford Junction, only 14 locks. Some excellent pubs etc. on the way, such as The Plough at Huddlesford, or The Boat at Minworth (no food Monday or Tuesday evenings).

After Salford Junction it's only three miles to Birmingham City Centre, and this is where we were pleased to have our friends Kate and Mike with us, since those three miles feature 23

locks, mostly very close together. That's where you need someone to walk on ahead preparing the locks. Plenty of room to moor in the city centre, very safe – lots of people about, and dozens of restaurants. We loved 'Bistro Pierre', opposite Gas St Basin, where on the second and fourth Tuesday of each month they do a special 6-course tasting menu – very reasonably priced and superb. Probably need to book!

Up early the next morning for the helmsman to take us down the 8-mile lock-free stretch towards Wolverhampton, three locks at Tipton Green then another 5 lock-free miles to Wolverhampton centre, by the station. Contrary to expectations, the Birmingham to Wolverhampton link is mostly an attractive 'green corridor'. The next stretch needs the lock team out on

the bank again, as there are 21 locks in the two miles down to Aldersley Junction (with the Staffs and Worcs canal).

From there it is a fairly straightforward run up to Great Haywood, timing it carefully to get a meal, or at least a drink at the Fox and Anchor at Cross Green on the way, and have a good look at Tixall wide. Shugborough Hall at Great Haywood, recently reopened by the National Trust, is worth a half-day visit, then it's down the Trent and Mersey, through Rugeley, and back to King's Bromley.

We only had a six-day week to do the trip, as our friends couldn't make it till late Sunday afternoon, but we covered the distance comfortably. In a full week in Summer it would be really quite easy, and it's a most enjoyable trip with the contrast between the city and country parts adding interest and variety.

## **Get to know the team more**

Why not get to know the team? This time its John Preece, we asked him a few questions to help you get to know him more.

### **What is your favourite part of the canals?**

I especially like the Ashby and the Peak Forest, but love the Fenland Rivers even more, such as The Great Ouse, the Lark, and the Wissey

### **Best time of the year to cruise?**

I like June , for its long days and (hopefully) sunshine

### **What is on your bucket list?**

A trip to the Maldives, a tank driving day, a tour round a sub-

### **marine to name just a few. Best way to relax?**

Sitting on the back of the boat, moored at the Tame Otter at Hopwas, in the sun, with a pint of Hobgoblin.

### **Who is on the guest list for your ideal dinner party, alive or not?**

I dont know if it would work out , but, - Isambard Kingdom Brunel, Fred Dibnah, Lady GaGa and Jane Seymour.

### **What quote do you live by?**

Both my wife and I now stick to, ..... The plan is - there's no plan !

### **What is one thing people would be surprised to know about you?**

I've been learning to play an old accordion sourced though ebay, and love to try rock numbers etc not normally heard on a squeezebox, such as Stairway to Heaven by Led Zepp and Nothing Else matters by Metallica. surprised to know they is possibly some at the end of your road & you didn't even know.)

## Sales

With a dedicated team now, we are doing more to help sell your shares. We take many calls, and emails throughout the week asking if we are advertising shares and where. We currently advertise in a number of places such as:

- Newspapers — Towpath Talk & Canal Boating Times.
- Magazines — Waterways World, Tillergraph, IWA Members magazine, Waterways World Annual
- Websites — there are 8 we are currently on, see below.
- Books — Boat buyers guide
- Window Displays — both of our offices and the boat windows themselves display for sale signs.
- Shows—from open days to the big shows like Crick
- Don't forget our snazzy little Vans and Smart Car which turns heads where ever she is.

We really do our best to get your share out there to our target market and the right people.



# Apollo Duck



**BCBM Boat Share Ltd**  
**Head office**  
**15 Shropshire Street**  
**Audlem**  
**Cheshire**  
**CW3 0AE**  
**Tel: 01270 811500**  
**Email: info@bcm.co.uk**  
**www.bcbm.co.uk**

